

## Pre-fit form Lagooni Junior XS

Dealer	
Consultant	
Delivery address	
Reference no.	
Phone no.	
Email	
Client	



Do you have any questions during the fitting?  
Call us at + 31 (0) 174-281551

Please fill in the fitting form as completely as possible. In case of missing data, the responsibility lies with the party who filled in the form.

SW: Seat width SH: Seat height  
SD: Seat depth LLL: Lower leg length

• = These components are chosen if a basic configuration is to be made.

### Frame

Choose 1 type of frame, use the flowchart model selection tool if the choice of frame type is not clear.

◦ Frame Junior XS: frame for the smallest sizes.

◦ A Junior XS shower-toilet wheelchair cannot be driven over a toilet bowl.

\* Please enter the required measurements in the "Dimensions" tab.

- **CFRA07** ☐ **Frame Junior XS** with height and backrest adjustment
- AFRA11** ☐ Other frame colour
- CFRA04** ☐ Custom frame \*

Comments:

### Wheels

◦ With 24" wheels, the range of seat height is: 53 cm (with a standard seat cushion of 6 cm thick). The seat height is measured from the ground to the top of the seat.

- CWIE20-75** ☐ 20" XCore rear wheels and 75 mm front wheels
- **CWIE24-100** ☐ 24" XCore rear wheels and 100 mm front wheels
- CWIE26-125** ☐ 26" Plastic wheels and 125 mm front wheels
- AWIE10** ☐ Removal push rims
- CWIE02A** ☐ Rubber slipcover for push rims 20"
- CWIE02B** ☐ Rubber slipcover for push rims 24"
- CWIE02C** ☐ Rubber slipcover for push rims 26"
- AWIE11** ☐ Mount push rims against wheel (not possible for 26")
- CWIE12** ☐ Push rims with tetranops, set
- CWIE12L** ☐ Push rims with tetranops, left
- CWIE12R** ☐ Push rims with tetranops, right

Comments:

Brakes

- CREM01SET ☐ Knee lever brake
- CREM02SET ☐ Extended brakes
- CREM06SET ☐ Scissor brakes

Comments:

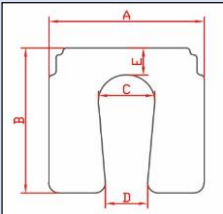
Seat

- Width: 30 / 32 / 34 / 36 cm
- Standard seat thickness: 6 cm
- Properties neoprene: soft, stiffer than platilon, suitable in combination with decubitus wounds.
- Properties platilon: strong, smoother than neoprene, suitable in combination with transfer board.
- \* Please enter the required measurements in the "Dimensions" tab.*

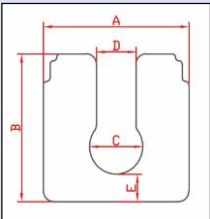
- CZIT01 ☐ Seat upholstered with polyether and neopreen or platilon \*
  - ☐ Neoprene: black
  - ☐ Platilon: black / matt grey / ferrari red / bright blue / navy blue
- CZIT07 ☐ Filler piece
- CZIT08 ☐ Abduction bobbin \*
- AZIT01E ☐ Extra seat adjustments \*

Example

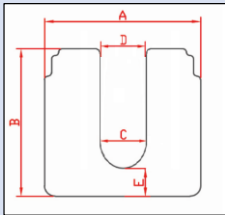
Opening front/back  
Shape: taperd



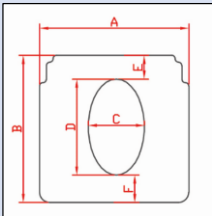
Opening front/back  
Shape: keyhole



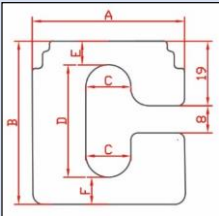
Opening front/back  
Shape: straight slot



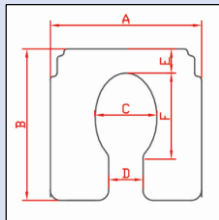
Opening middle/deviating  
Shape: oval



Opening left/right  
Shape: oval



Opening front/back  
Shape: ellipse



Inch	cm
1	2,54

Please state the **dimensions (cm)** of the recess below.  
There is a surcharge for a recess on the left or right side.  
If the place/shape (for example wedge in the seat) differs from the examples above, please enclose a drawing including dimensions.

Fields marked with * are <b>REQUIRED</b> .	
* A:	
* B:	
* C:	
* D:	
* E:	
F:	
* Location opening:	
* Shape opening:	

(<7 cm not possible)

Comments:

### Backrest bracket

- The width of the backrest bracket is as wide as the width of the seat.
- The standard height of a backrest bracket is 48 cm.

- **CRUG01** ☐ Backrest bracket
- CRUG01-M** ☐ Backrest bracket custom made \*

Comments:

### Backrest

- The standard height of a backrest canvas is 30 cm.
- If an upholstered backrest is chosen, the following applies: seat depth + 3 cm.
- For a 'standard' upholstered backrest the following applies: width of the upholstered back = backrest bracket + 2 cm.
- Properties neoprene: soft, stiffer than platilon, suitable in combination with decubitus wounds.
- Properties platilon: strong, smoother than neoprene, suitable in combination with transfer board.

\* Please enter the required measurements in the "Dimensions" tab.

- **CRUG12** ☐ Backrest canvas, black
- CRUG01B** ☐ Backrest upholstered with polyether and neoprene or platilon \*
  - ☐ Neoprene: black
  - ☐ Platilon: black / matt grey / ferrari red / bright blue / navy blue
- CRUG01BZIJ** ☐ Backrest upholstered with side support with polyether and neoprene or platilon \*
  - ☐ Neoprene: black
  - ☐ Platilon: black / matt grey / ferrari red / bright blue / navy blue
- CRUG01K** ☐ Backrest upholstered contour with polyether and neoprene or platilon \*
  - ☐ Neoprene: black
  - ☐ Platilon: black / matt grey / ferrari red / bright blue / navy blue

Comments:

### Armrest

▫ The armrests are swing-away and removable.

▫ The height of the armrest is measured from top edge of seat to top edge of armrest.

▫ For shorter and lower armrests, you can choose a junior armrest (see size sheet tab) or a custom-made armrest.

*\* Please enter the required measurements in the "Dimensions" tab.*

- |             |                          |                                    |
|-------------|--------------------------|------------------------------------|
| • CARM03-15 | <input type="checkbox"/> | Junior armrest straight H15 cm     |
| • CARM03-18 | <input type="checkbox"/> | Junior armrest straight H18 cm     |
| CARM01      | <input type="checkbox"/> | Armrest single bend H23 cm         |
| CARM02      | <input type="checkbox"/> | Armrest extra strong H23 cm        |
| CARM04      | <input type="checkbox"/> | Armrest custom-made *              |
| CARM09      | <input type="checkbox"/> | Armrest with extra horizontal bend |
| AARM02E     | <input type="checkbox"/> | Additional work armrests (lower) * |
| -           | <input type="checkbox"/> | No armrests                        |

Comments:

### Armpad

▫ Properties neoprene: soft, stiffer than platilon, suitable in combination with decubitus wounds.

▫ Properties platilon: strong, smoother than neoprene, suitable in combination with transfer board.

*\* Please enter the required measurements in the "Dimensions" tab.*

- |          |                          |   |
|----------|--------------------------|---|
| • CARM05 | <input type="checkbox"/> | Armpads PU  |
| CARM06   | <input type="checkbox"/> | Armpads upholstered   |
|          |                          | <input type="radio"/> Neoprene: black   |
|          |                          | <input type="radio"/> Platilon: black / matt grey / ferrari red / bright blue / navy blue |
| AARM06E  | <input type="checkbox"/> | Extra labour upholstered armpads *  |
| -        | <input type="checkbox"/> | No armpads  |

Comments:

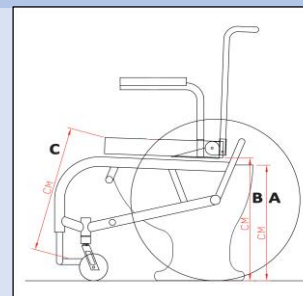
### Legrest and footplates

▫ Properties neoprene: soft, stiffer than platilon, suitable in combination with decubitus wounds.

▫ Properties platilon: strong, smoother than neoprene, suitable in combination with transfer board.

*\* Please enter the required measurements in the "Dimensions" tab.*

- **CVOE13** ☐ One-piece footrest Junior XS, upholstered  
☐ Neoprene: black  
☐ Platilon: black / matt grey / ferrari red / bright blue / navy blue
- CVOE10** ☐ One-piece footrest Junior XS, upholstered and foldable to the back/side  
☐ Mounting on footplate, foldable to the left  
☐ Mounting on footplate, foldable to the right  
☐ Foldable to the back (LLL max. 35 cm)  
☐ Neoprene: black  
☐ Platilon: black / matt grey / ferrari red / bright blue / navy blue
- AVOE01E** ☐ Extra adjustments upholstered footplate \*  
- ☐ No legrest or footplates



Toilet bowl height - A (cm):

Bottom of seat - B (cm):

Lower leg length - C (cm):

Comments:

### Anti-Tip

▫ In combination with a passive/ceiling lift, an anti-tip system is recommended.

- CATI01** ☐ Anti-tip with foot pedal

Comments:

### Headrest

▫ If a headrest is chosen, it is recommended to choose a upholstered backrest.

▫ Properties neoprene: soft, stiffer than platilon, suitable in combination with decubitus wounds.

▫ Properties platilon: strong, smoother than neoprene, suitable in combination with transfer board.

- CSTE02** ☐ Headrest upholstered  
☐ Neoprene: black  
☐ Platilon: black / matt grey / ferrari red / bright blue / navy blue
- CSTE03K** ☐ Headrest PU **Small**
- CSTE03MG** ☐ Headrest PU **Medium**

Comments:

### Lateral support

▫ *Length of pelvic belt: from rotary knob back angle adjustment left to rotary knob back angle adjustment right.*

▫ *Properties neoprene: soft, stiffer than platilon, suitable in combination with decubitus wounds.*

▫ *Properties platilon: strong, smoother than neoprene, suitable in combination with transfer board.*

*\* Please enter the required measurements in the "Dimensions" tab.*

- CSTE01L** ☐ Lateral support upholstered with mounting kit, left \*
- ☐ Neoprene: black
- ☐ Platilon: black / matt grey / ferrari red / bright blue / navy blue
- CSTE01R** ☐ Lateral support upholstered with mounting kit, right \*
- ☐ Neoprene: black
- ☐ Platilon: black / matt grey / ferrari red / bright blue / navy blue
- CGOR02** ☐ Pelvic belt

Length pelvic belt (cm):

Comments:

### Leg protection

▫ *Properties neoprene: soft, stiffer than platilon, suitable in combination with decubitus wounds.*

▫ *Properties platilon: strong, smoother than neoprene, suitable in combination with transfer board.*

- CKUI01** ☐ Adjustable calf strap **neopreen**
- CKUI02** ☐ Calf protector for frame tube, upholstered
- ☐ Neoprene: black
- ☐ Platilon: black / matt grey / ferrari red / bright blue / navy blue
- CKUI03** ☐ Adjustable calf strap **bisonyl**

Comments:

### Insertion rails stainless steel

CTOO07 ☐ Insertion rails for toiletbucket Junior XS

Comments:

### Toilet bucket

CTOO08 ☐ Plastic toilet bucket with lid Junior XS

Comments:

### Accessories

*\* Please enter the required measurements in the "Dimensions" tab.*

CTOO01SP ☐ Splash skirt (bisonyl) \*

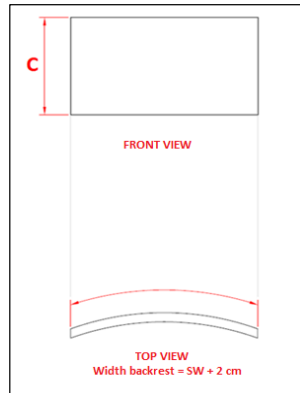
CTAF01 ☐ Tabletop transparent with accessories \*

CBED01 ☐ Bedhook and receiver

Comments:

## BACKREST

### Upholstered backrest



Upholstered backrest	
C:	

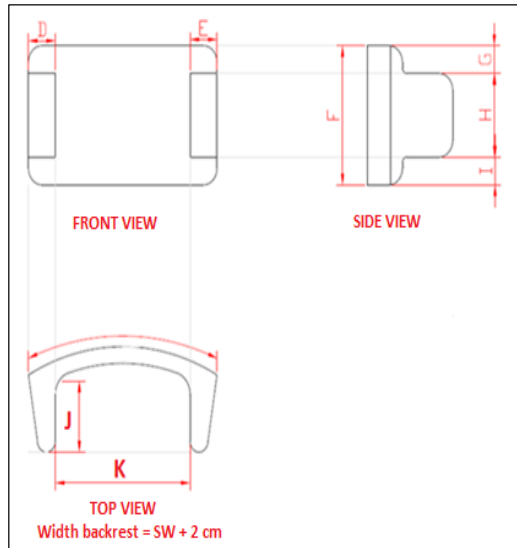
(Minimum 15 cm, maximum 40 cm)

#### Note:

- With a padded backrest, the effective seat depth is reduced by 3 cm.

- A padded backrest is 2 cm wider than the backrest bracket and therefore also the seat width. Take this into account when completing the tables below.

### Upholstered backrest with lateral support



Upholstered backrest with lateral support	
D <sub>right</sub> :	
E <sub>left</sub> :	
F:	
G <sub>right</sub> :	
G <sub>left</sub> :	
H <sub>right</sub> :	
H <sub>left</sub> :	
I <sub>right</sub> :	
I <sub>left</sub> :	
J <sub>right</sub> :	
J <sub>left</sub> :	
K:	

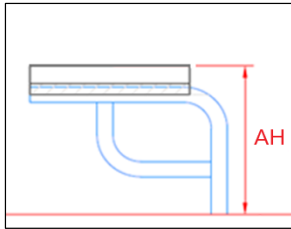
## ARMREST

### Type armrest

Armrest type: extra strong, single bend & horizontal bend

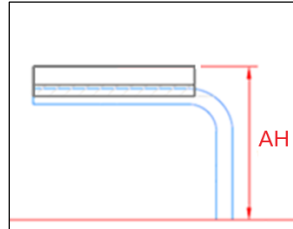
#### Extra strong

Height AH: customised



#### Single bend

Height AH: customised

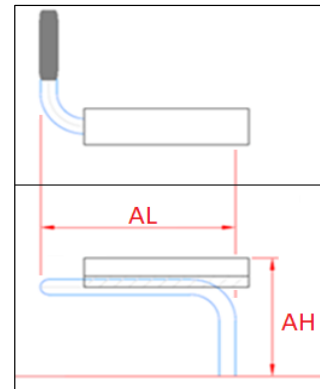


#### Horizontal bend

Example left armrest with horizontal bend in front.

Height AH: customised

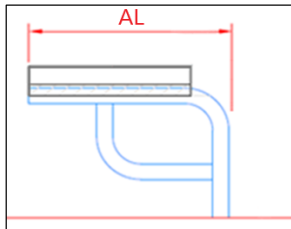
Length AL: customised



#### Extra strong

Length AL: customised

Standard AL extra strong: 32 cm

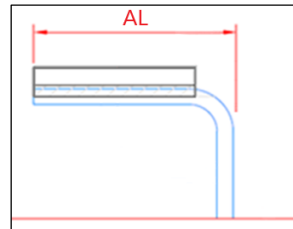


#### Single bend

Length AL: customised

Standard AL single bend: 32 cm

Standard AL Junior: 24 cm



#### AH - Height custom armrest (cm)

Extra strong:	
Single bend:	
Horizontal bend:	

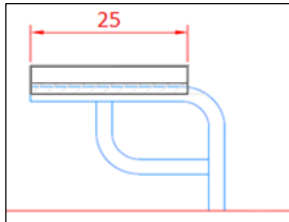
#### AL - Length custom armrest (cm)

Extra strong:	
Single bend:	
Horizontal bend:	

## Type armpad

Armpad type: PU & upholstered.

### PU armpad

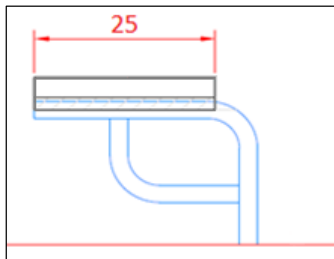


Length: 25 cm (standard)

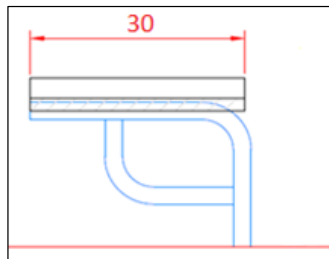
#### Note:

The PU armrests are available in a standard size of 25 cm. If a different size is required, choose a padded armrest. The armrests are adaptable for the extra strong armrests as well as the armrests with single bend and the armrests with horizontal bend. Enter the required dimensions in the table at the end of this document.

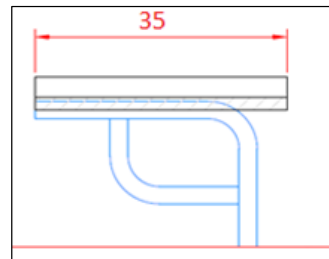
### Upholstered armpad



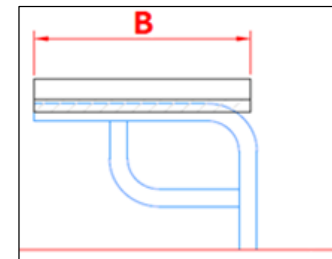
Length: 25 cm



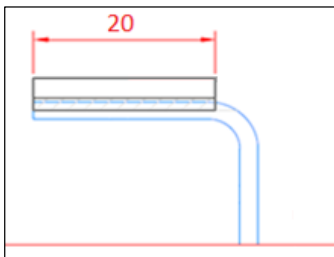
Length: 30 cm  
5cm extended backwards



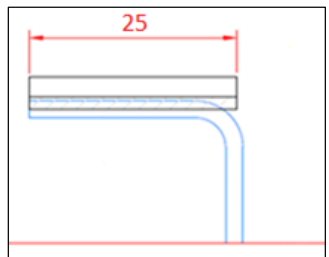
Length: 35 cm  
10 cm extended backwards



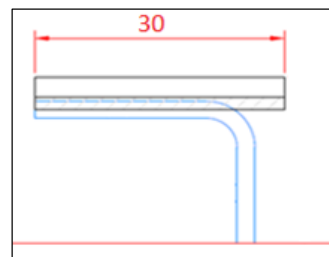
Length: customized



Junior model  
Length: 20 cm



Junior model  
Length: 25 cm  
5 cm extended backwards



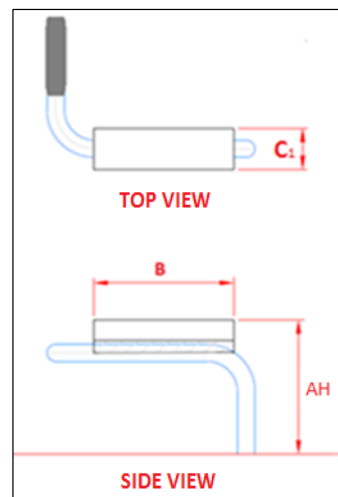
Junior model  
Length: 30 cm  
10 cm extended backwards

#### Note:

Junior armrests are **lower** and **shorter** than the extra strong armrests & armrests with single bend. Please take this into account when choosing the armrest length.

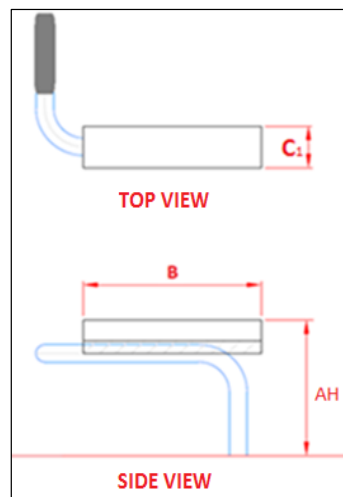
Upholstered armrest width ( $C_1$ ) is 6 cm wide as standard.

Example: Front armrest bend: left (Junior model)



Armrest horizontal bend

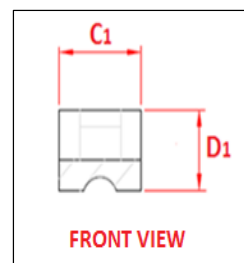
Height (AH): 15/18/23/... cm  
Length armpad (B): 20 cm  
Width armpad ( $C_1$ ): 6 cm



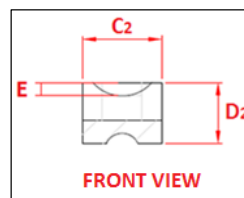
Armrest horizontal bend

Height (AH): 15/18/23/... cm  
Length armpad (B): 25 cm  
Width armpad ( $C_1$ ): 6 cm

Upholstered armrest width ( $C_1$ ) is 6 cm wide as standard.



FRONT VIEW



FRONT VIEW

Measurements hemiplegic armrest

Measurements armrest & armpad (cm)	
AH:	Standard 15/18
B:	
$C_1$ :	
$C_2$ :	
$D_1$ :	
$D_2$ :	
E:	
Extend to:	

( $C_1$  &  $C_2$ : minimum 6 cm, maximum 12 cm)

( $D_1$ : minimum 4 cm, maximum 10 cm)

( $D_2 = E + \text{minimum 4 cm}$ )

## ACCESSORIES

### Splash skirt

A Splash skirt is made of bisonyl. It is mounted under the seat. Fill in the width and height of the splash skirt below.

Measurements in cm

Height	
Width	

### Table top

A table top is fitted under the armrest using a receiving tube and fastened with a star knob. Indicate below which side the table top should fold away. Then also indicate the dimensions of the table top and the stomach recess.

- ☐ Swing away to the left  
☐ Swing away to the right

Measurements in cm

Total width		
Total depth		
Belly recess		

The minimum total width of the table top is seat width + 10 cm.

The maximum depth of the table top is 60 cm.

Belly recess: measure from the back of the tabletop to the front of the Belly.