

Pre-fit form Lagooni Compact self-propelled / push model

Dealer	
Consultant	
Delivery address	
Reference no.	
Phone no.	
Email	
Client	



Do you have any questions during the fitting?

Call us at + 31 (0) 174-281551

Please fill in the fitting form as completely as possible. In case of missing data, the responsibility lies with the party who filled in the form.

SW: Seat width

SH: Seat height

SD: Seat depth

LLL: Lower leg length

• = These components are chosen if a basic configuration is to be made.

Frame

Choose 1 type of frame, use the flowchart model selection tool if the choice of frame type is not clear.

• The Lagooni Compact has a demountable frame.

• If you require a seat depth < 43 cm, please take into account the bar at the front that could potentially get in the way.

* Please enter the required measurements in the "Dimensions" tab.

- **CFRA05** ☐ **Frame Compact pushmodel** with height and backrest adjustment.
Also select from:
 - ☐ Compact stainless steel legs (for 4 swivelwheels) standard
 - ☐ Compact stainless steel legs (for 4 swivelwheels) custom made
- **CFRA05ZR** ☐ **Frame Compact self-propelled** with height and backrest adjustment.
Also select from:
 - ☐ Compact stainless steel legs (for 20" wheels) standard
 - ☐ Compact stainless steel legs (for 20" wheels) custom made
- AFRA11** ☐ Other frame colour
- CFRA04** ☐ Custom frame *

Comments:

Wheels

° Seat height is adjustable from: 52 -61 cm (with a standard seat cushion 8 cm thick). The seat height is measured from the ground to the top edge of the seat.

° Take the seat height into account if the shower/toilet wheelchair needs to be driven over a toilet bowl.

- **CWIE4-100R** ☐ 100 mm castors with brake (*pushmodel*)
- CWIE4-125R** ☐ 125 mm castors with brake (*pushmodel*)
- **CWIE20-100** ☐ 20" XCore rear wheels and 100 mm front wheels
- CWIE24-125** ☐ 24" XCore rear wheels and 125 mm front wheels
- AWIE10** ☐ removal pushrims
- CWIE02A** ☐ Rubber slipcover for push rims 20"
- CWIE02B** ☐ Rubber slipcover for push rims 24"
- AWIE11** ☐ Mount push rims against wheel
- CWIE12** ☐ Push rims with tetranops, set
- CWIE12L** ☐ Push rims with tetranops, left
- CWIE12R** ☐ Push rims with tetranops, right

Comments:

Brakes

° The following brakes only apply if a Lagooni Compact self-propelled frame has been chosen.

- CREM01SET** ☐ Knee lever brake
- **CREM02SET** ☐ Extended brakes
- CREM06SET** ☐ Scissor brakes

Comments:

Seat

- Width: 40 / 42 / 44 / 46 cm
- Standard seat thickness: 8 cm (minimum of 6 cm).
- If you require a seat depth < 43 cm, please take into account the bar at the front that could potentially get in the way. If necessary, choose a padded backrest to achieve a seat depth of less than 43 cm.

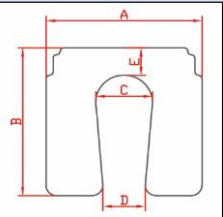
- Properties neoprene: soft, stiffer than platilon, suitable in combination with decubitus wounds.
- Properties platilon: strong, smoother than neoprene, suitable in combination with transfer board.

* Please enter the required measurements in the "Dimensions" tab.

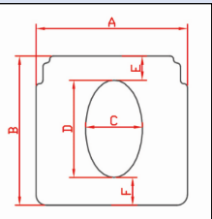
- CZIT01 ☐ Seat upholstered with polyether and neopreen or platilon *
 - ☐ Neoprene: black
 - ☐ Platilon: black / matt grey / ferrari red / bright blue / navy blue
- CZIT07 ☐ Filler piece
- CZIT08 ☐ Abduction bobbin *
- AZIT01E ☐ Extra seat adjustments *

Example

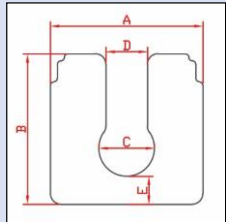
Opening front/back
Shape: taperd



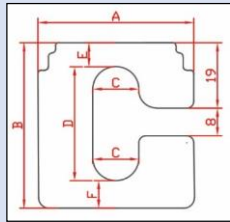
Opening middle/deviating
Shape: oval



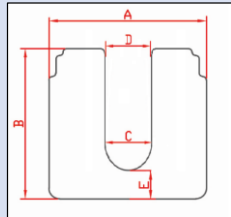
Opening front/back
Shape: keyhole



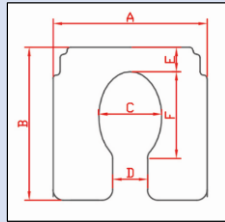
Opening left/right
Shape: oval



Opening front/back
Shape: straight slot



Opening front/back
Shape: ellipse



Inch	cm
1	2,54

Please state the **dimensions (cm)** of the recess below.
There is a surcharge for a recess on the left or right side.
If the place/shape (for example wedge in the seat)
differs from the examples above, please enclose a
drawing including dimensions.

Fields marked with * are REQUIRED .	
* A:	
* B:	
* C:	
* D:	
* E:	
F:	
* Location opening:	
* Shape opening:	

(<7 cm not possible)

Comments:

Backrestbracket

- The width of the backrest bracket is as wide as the width of the seat.
- The standard height of a backrest bracket is 48 cm.

- **CRUG01** ☐ Backrest bracket
- CRUG01-M** ☐ Backrest bracket custom made *

Comments:

Backrest

- The standard height of a backrest canvas is 30 cm.
- If an upholstered backrest is chosen, the following applies: seat depth + 3 cm.
- For a 'standard' upholstered backrest the following applies: width of the upholstered back = backrest bracket + 2 cm.
- Properties neoprene: soft, stiffer than platilon, suitable in combination with decubitus wounds.
- Properties platilon: strong, smoother than neoprene, suitable in combination with transfer board.

* Please enter the required measurements in the "Dimensions" tab.

- **CRUG12** ☐ Backrest canvas, black
- CRUG01B** ☐ Backrest upholstered with polyether and **neoprene or platilon** *
 - ☐ Neoprene: black
 - ☐ Platilon: black / matt grey / ferrari red / bright blue / navy blue
- CRUG01BZU** ☐ Backrest upholstered with side support with polyether and **neoprene or platilon** *
 - ☐ Neoprene: black
 - ☐ Platilon: black / matt grey / ferrari red / bright blue / navy blue
- CRUG01K** ☐ Backrest upholstered contour with polyether and **neoprene or platilon** *
 - ☐ Neoprene: black
 - ☐ Platilon: black / matt grey / ferrari red / bright blue / navy blue

Comments:

Armrest

▫ The armrests are swing-away and removable.

▫ The height of the armrest is measured from top edge of seat to top edge of armrest.

▫ For shorter and lower armrests, you can choose a junior armrest (see size sheet tab) or a custom-made armrest.

** Please enter the required measurements in the "Dimensions" tab.*

- | | | |
|-----------|--------------------------|------------------------------------|
| CARM03-15 | <input type="checkbox"/> | Junior armrest straight H15 cm |
| CARM03-18 | <input type="checkbox"/> | Junior armrest straight H18 cm |
| CARM01 | <input type="checkbox"/> | Armrest single bend H23 cm |
| ● CARM02 | <input type="checkbox"/> | Armrest extra strong H23 cm |
| CARM04 | <input type="checkbox"/> | Armrest custom-made * |
| CARM09 | <input type="checkbox"/> | Armrest with extra horizontal bend |
| AARM02E | <input type="checkbox"/> | Additional work armrests (lower) * |
| - | <input type="checkbox"/> | No armrests |

Comments:

Armpad

▫ Properties neoprene: soft, stiffer than platilon, suitable in combination with decubitus wounds.

▫ Properties platilon: strong, smoother than neoprene, suitable in combination with transfer board.

** Please enter the required measurements in the "Dimensions" tab.*

- | | | |
|----------|--------------------------|---|
| ● CARM05 | <input type="checkbox"/> | Armpads PU |
| CARM06 | <input type="checkbox"/> | Armpads upholstered |
| | | <input type="radio"/> Neoprene: black |
| | | <input type="radio"/> Platilon: black / matt grey / ferrari red / bright blue / navy blue |
| AARM06E | <input type="checkbox"/> | Extra labour upholstered armpads * |
| - | <input type="checkbox"/> | No armpads |

Comments:

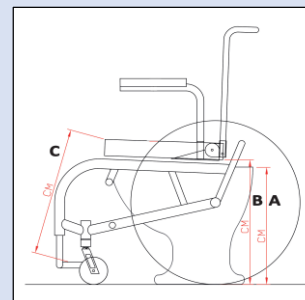
Legrest and footplate

▫ *Properties neoprene: soft, stiffer than platilon, suitable in combination with decubitus wounds.*

▫ *Properties platilon: strong, smoother than neoprene, suitable in combination with transfer board.*

** Please enter the required measurements in the "Dimensions" tab.*

- **CBE03SET** ☐ Swing-away legrest with flip-up footplate
- CBE02SET** ☐ Elevating legrest with flip-up footplate
- CBE04SET** ☐ Elevating legrest, upper part (for amputation)
- CVOE03** ☐ One-piece footrest, upholstered (mounting footrest with clamps)
 - ☐ Neoprene: black
 - ☐ Platilon: black / matt grey / ferrari red / bright blue / navy blue
- CVOE04B** ☐ Upholstery one-piece footplate
 - *In combination with swing-away legrest*
 - ☐ Mounting on footplate, foldable to the right
 - ☐ Mounting on footplate, foldable to the left
 - ☐ Neoprene: black
 - ☐ Platilon: black / matt grey / ferrari red / bright blue / navy blue
- CVOE09** ☐ Upholstery two-piece footplate
 - ☐ Neoprene: black
 - ☐ Platilon: black / matt grey / ferrari red / bright blue / navy blue
- AVOE01E** ☐ Extra adjustments upholstered footplate *
- ☐ No legrest or footplates



Toilet bowl height - A (cm):

Bottom of seat - B (cm):

Lower leg length - C (cm):

Comments:

Headrest

▫ *If a headrest is needed, it is recommended to choose a upholstered backrest.*

▫ *Properties neoprene: soft, stiffer than platilon, suitable in combination with decubitus wounds.*

▫ *Properties platilon: strong, smoother than neoprene, suitable in combination with transfer board.*

- CSTE02** ☐ Headrest upholstered
 - ☐ Neoprene: black
 - ☐ Platilon: black / matt grey / ferrari red / bright blue / navy blue
- CSTE03K** ☐ Headrest PU **Small**
- CSTE03MG** ☐ Headrest PU **Medium**

Comments:

Lateral support

▫ *Length of pelvic belt: from rotary knob back angle adjustment left to rotary knob back angle adjustment right.*

▫ *Properties neoprene: soft, stiffer than platilon, suitable in combination with decubitus wounds.*

▫ *Properties platilon: strong, smoother than neoprene, suitable in combination with transfer board.*

** Please enter the required measurements in the "Dimensions" tab.*

- CSTE01L** ☐ Lateral support upholstered with mounting kit, left *
- ☐ Neoprene: black
- ☐ Platilon: black / matt grey / ferrari red / bright blue / navy blue
- CSTE01R** ☐ Lateral support upholstered with mounting kit, right *
- ☐ Neoprene: black
- ☐ Platilon: black / matt grey / ferrari red / bright blue / navy blue
- CGOR02** ☐ Pelvic belt

Length pelvic belt (cm):

Comments:

Leg protection

▫ *Properties neoprene: soft, stiffer than platilon, suitable in combination with decubitus wounds.*

▫ *Properties platilon: strong, smoother than neoprene, suitable in combination with transfer board.*

- CKUI01** ☐ Adjustable calf strap **neopreen**
- CKUI02** ☐ Calf protector for frame tube, upholstered
- ☐ Neoprene: black
- ☐ Platilon: black / matt grey / ferrari red / bright blue / navy blue
- CKUI03** ☐ Adjustable calf strap **bisonyl**

Comments:

Insertion rails stainless steel

° The rails protrude 3 cm below the seat. Take this into account when determining the seat height.

CTOO03 ☐ Insertion rails for bedpan / toiletbucket Ø 30 cm

Comments:

Bedpan / toilet bucket

° When rinsing the intestines, it is advised to choose a toilet bucket because of the size of the bucket.

CTOO02 ☐ Bedpan with lid, stainless steel

CTOO04 ☐ Toilet bucket with lid, stainless steel

Comments:

Accessories

° Certain configurations may hinder the fit of a complete chair in a suitcase. Please contact Lagooni if you have any questions.

* Please enter the required measurements in the "Dimensions" tab.

CTOO01SP ☐ Splash skirt (bisonyl) *

CTAF01 ☐ Tabletop transparent with accessories *

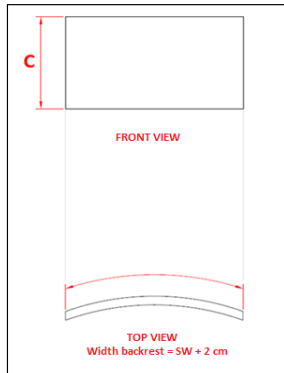
CBED01 ☐ Bedhook and receiver

CDRT02 ☐ Suitcase

Comments:

Backrest

Upholstered backrest



Upholstered backrest

C:

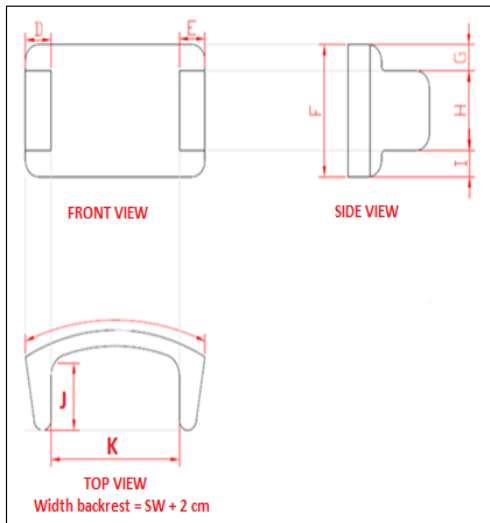
(Minimum 15 cm, maximum 40 cm)

Note:

- With a padded backrest, the effective seat depth is reduced by 3 cm.

- A padded backrest is 2 cm wider than the backrest bracket and therefore also the seat width. Take this into account when completing the tables below.

Upholstered backrest with lateral support



Upholstered backrest with lateral support

D _{right} :	
E _{left} :	
F :	
G _{right} :	
G _{left} :	
H _{right} :	
H _{left} :	
I _{right} :	
I _{left} :	
J _{right} :	
J _{left} :	
K :	

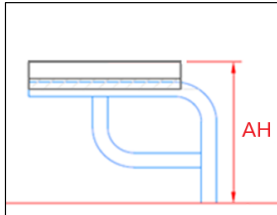
ARMREST

Type armrest

Armrest type: extra strong, single bend & horizontal bend

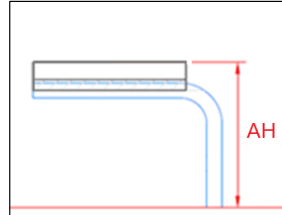
Extra strong

Height AH: customised



Single bend

Height AH: customised

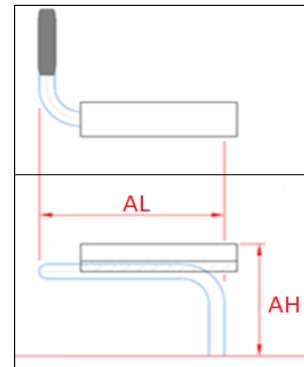


Horizontal bend

Example left armrest with horizontal bend in front.

Height AH: customised

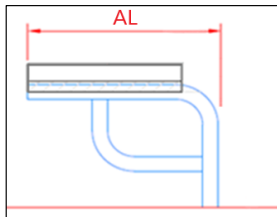
Length AL: customised



Extra strong

Length AL: customised

Standard AL extra strong: 32 cm

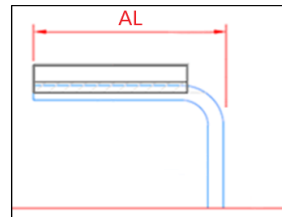


Single bend

Length AL: customised

Standard AL single bend: 32 cm

Standard AL Junior: 24 cm



AH - Height custom armrest (cm)

Extra strong:	
Single bend:	
Horizontal bend:	

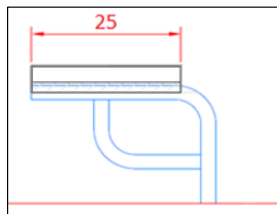
AL - Length custom armrest (cm)

Extra strong:	
Single bend:	
Horizontal bend:	

Type armpad

Armpad type: PU & upholstered.

PU armpad

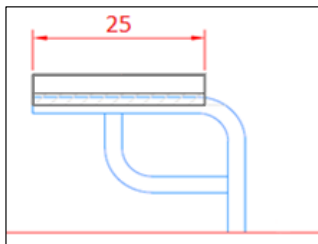


Length: 25 cm (standard)

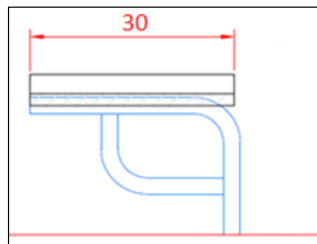
Note:

The PU armrests are available in a standard size of 25 cm. If a different size is required, choose a padded armrest. The armrests are adaptable for the extra strong armrests as well as the armrests with single bend and the armrests with horizontal bend. Enter the required dimensions in the table at the end of this document.

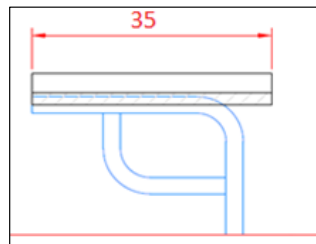
Upholstered armpad



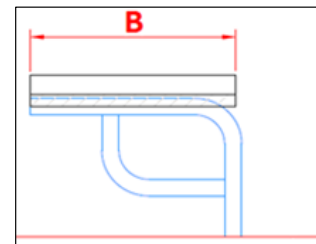
Length: 25 cm



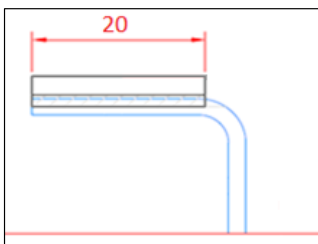
Length: 30 cm
5cm extended backwards



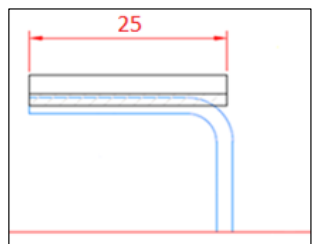
Length: 35 cm
10 cm extended backwards



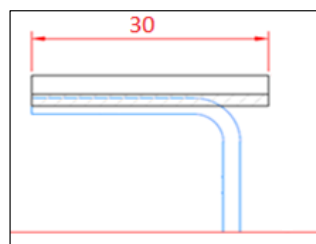
Length: customized



Junior model
Length: 20 cm



Junior model
Length: 25 cm
5 cm extended backwards



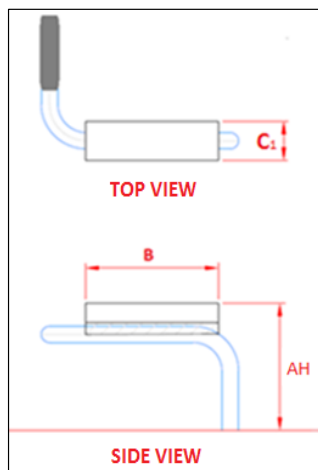
Junior model
Length: 30 cm
10 cm extended backwards

Note:

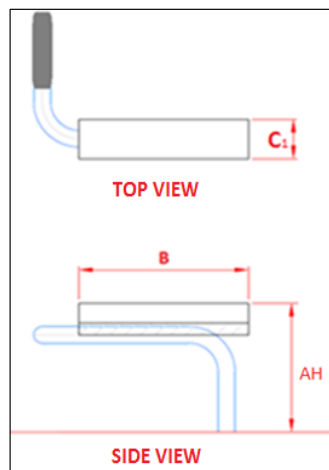
Junior armrests are **lower** and **shorter** than the extra strong armrests & armrests with single bend. Please take this into account when choosing the armrest length.

Upholstered armrest width (C₁) is 6 cm wide as standard.

Example: Front armrest bend: left (Junior model)

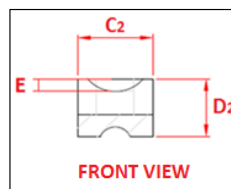
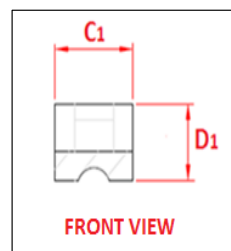


Armrest horizontal bend
 Height (AH): 15/18/23/... cm
 Length armpad (B): 20 cm
 Width armpad (C₁): 6 cm



Armrest horizontal bend
 Height (AH): 15/18/23/... cm
 Length armpad (B): 25 cm
 Width armpad (C₁): 6 cm

Upholstered armrest width (C₁) is 6 cm wide as standard.



Measurements hemiplegic armrest

Measurements armrest & armpad (cm)	
A:	Standard 23
B:	
C ₁ :	
C ₂ :	
D ₁ :	
D ₂ :	
E:	
Extend to:	

(C₁ & C₂: minimum 6 cm, maximum 12 cm)

(D₁: minimum 4 cm, maximum 10 cm)

(D₂ = E + minimum 4 cm)

ACCESSORIES

Splash skirt

A Splash skirt is made of bisonyl. It is mounted under the seat. Fill in the width and height of the splash skirt below.

Measurements in cm

Height	
Width	

Table top

A table top is fitted under the armrest using a receiving tube and fastened with a star knob. Indicate below which side the table top should fold away. Then also indicate the dimensions of the table top and the stomach recess.

- ☐ Swing away to the left
☐ Swing away to the right

Measurements in cm

Total width		
Total depth		
Belly recess		

The minimum total width of the table top is seat width + 10 cm.

The maximum depth of the table top is 60 cm.

Belly recess: measure from the back of the tabletop to the front of the Belly.